



# Summer Newsletter

## North West Three Maths Hub

May 2017



### House of Lords visit

**Lisa Bradshaw (Maths Hub Lead)**  
and **Kirsty Haw (Senior Lead)**

attended an **MEI** ceremony at the **House of Lords** to discuss the sustained growth in AS and A level Mathematics and Further Mathematics entries which has been a great success. Maths hubs, with other partners must ensure policies continue to support this, so that schools and colleges can maintain and continue that growth. Other areas discussed were CMSP, current policy for GCSE Maths and recruitment and retention of maths teachers.



### NCETM CPD Standard success

Congratulations to **North West Three Maths Hub** on being the first Maths Hub to be awarded the **NCETM CPD Standard**. Formally, the award has been made to the "St. Helens Teaching School Alliance/North West Three Maths Hub" based on all of the maths CPD work carried out either by the TSA or the Maths Hub. The award demonstrates the Hub's commitment to high standards in maths CPD and S2S support.



### Reassurance from OFTSED on a Mastery approach

Congratulations to **Eccleston CofE Primary School** (Chester) on their recent fantastic Mathematics subject inspection. The school has been on a Mastery Journey, supported by NW Maths Hub 3 specialist teacher Rachel Hounslow-Griffiths, for 12 months. Jane Jones HMI who led the inspection was most impressed by the schools journey and strategies implemented to improve outcomes for pupils. Miss Katie Cade, HT reported that Jane Jones was extremely thorough yet staff, in particular leaders in the school, felt secure in conveying the schools mathematical journey.

Miss Cade commented: *Thanks to your expertise and guidance, we were able to justify completely our plans for improving Maths so a massive thank you.*

Jane Jones will visit NW Maths Hub 3 to deliver a briefing to HTs/maths leads in the autumn 2017- details to follow...

### National Maths Hub Council

Congratulations to **Kirsty Haw** (Senior Lead) who has been appointed as the NW representative on the National Maths Hub Council. The role of the Council is to work on behalf of the whole Maths Hubs Network to discuss strategic priorities for the Maths Hubs programme and report to Ministers on progress made.



# Primary and EYFS National and Local Projects

‘Teaching for Mastery’ – NW Maths Hub 3 supporting schools to develop an understanding of Mastery and working towards achieving this for all!

## China-England exchange - Autumn 2017



George Mounsdon and Andy Ash will be taking part in the exchange on behalf of NW3 Maths Hub. Both Mastery Specialists from Cohort 2 will visit Shanghai in September 2017. George Mounsdon, Huyton with Roby CE Primary School (Knowsley), will take the lead and therefore be the host school for the return leg of the visit in January 2018. We look forward to inviting Mastery WG schools and larger groups to attend showcase events. Further details will be available in the autumn term.

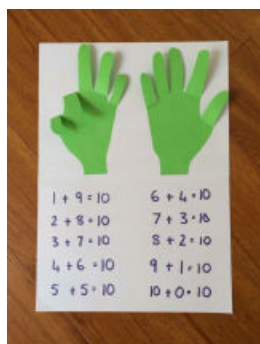


## Excellent Maths teacher programme

We have now trained 70 teachers/Maths leads from across the NW in supporting them to build leadership capacity within their own school and beyond. Learning from the programme has been used to develop the participant and other teachers within their context ultimately impacting positively on them as a leader, staff in the school and pupil outcomes and attitudes to maths. The programme has proven to have significant impact for the staff receiving the training in terms of personally and professionally and has ultimately impacted on improving the provision for pupils that they teach.

This extremely popular programme will begin again in September 2017. We are taking EOI and will be recruiting an additional 40 teachers in the summer term. Please email- Lisa Bradshaw if you or a member of your staff is interested in being part of this.

The overall aim of the programme is to share and develop effective mathematics practice across the NW providing a school led approach to improving teaching and leadership of mathematics.



## Maths Mastery Specialist Teachers



At the start of the year, there were 133 Cohort 1 Mastery Specialists and 148 Cohort 2 Mastery Specialists. Further cohorts of Mastery Specialists will be recruited to the programme for 2017-18, 2018-19, and 2019-20. The intention is that at the beginning of 2019-20, there will be a total of 700 Mastery Specialists, either leading Work Groups or in their development year. 9 Masters are currently working for NW Maths Hub 3 with 56 schools

receiving Mastery support through this programme.

Cohort 3 recruitment: Congratulations to the following people who will become part of the NW Maths Hub 3 Mastery Specialist team in 2017-18 - Maria Chambers (Wirral), Doug Pitts (Wigan) and Sarah Wilkins (Warrington). The Masters will join our team of 12 specialists and will receive national training in July. Further recruitment rounds will open again in 2017-18.

## Recruitment of more primary schools to Teaching for Mastery Programme

The NCETM has announced details of the next round of recruitment of schools to the funded Teaching for Mastery Programme, run by Maths Hubs across England. This year, a total of 1700 primary schools are sought. Each Maths Hub is looking for around 50 schools, for a year-long programme of professional development, led by trained Mastery Specialists. Each school will belong to a Maths Hub Work Group, consisting of six or seven primary schools, and led by a Mastery Specialist from a nearby school.

As well as receiving this free training, the recruited schools will receive financial support to release teachers for workshops, and towards buying textbooks. **The application deadline is 16 June 2017**- please follow this link to apply: <http://bit.ly/2pUg1Z7>

## EYFS - Developing Mathematical fluency to raise expectation/number focus and progression (local project):

The Work Group has been put together based on analysis of need, in that schools are looking at the ramifications of Teaching for Mastery in KS1 for EY settings. Research shows that the most effective way to help schools implement educational changes is through the development of professional learning communities. Each school will receive a combination of core training; classroom based coaching sessions and some group mentoring. 13 schools have now completed wave 1 and 2 of the project. A briefing was held in March at The World of Glass in St Helens. This was attended by 129 HTs and EYFS leads from across 65 settings. As a result, 50 schools expressed an interest in being involved in the next wave of the roll out. Due to an overwhelming response and growing capacity in delivering this programme we have decided to support 25 schools in Wave 3, starting in June 2017 and a further 25 in Wave 4 starting in autumn 2017.

Due to the success of the programme and high levels of demands we will hold another briefing in the autumn term to recruit additional schools. Further details to follow...

---

## Maths Mastery Programme (Northern Hub) working in association with NW Maths Hub 3

What the 'Mathematics Mastery' programme includes:

- In-depth training for headteachers and classroom teachers
- A mastery curriculum with detailed programmes of study
- Classroom resources for every lesson of the year
- Collaborative CPD workshops and events
- Specialist in-school support from a member of our team
- A suite of assessment tools



50% reduction on programme costs was applied for schools in the St Helens TSA / NW3 Maths Hub region

### **Congratulations to the following schools that were successful in their applications:**

Liverpool College (Liverpool), Holy Trinity Catholic Primary School (Liverpool), Banks Road Primary School (Liverpool), St Ambrose Catholic Primary School (Liverpool), Longton Lane Community Primary School (St. Helens), Oasis Academy Aspinall (Manchester), Dukessgate Academy (Salford), Marlborough Road Academy (Salford), Oasis Academy Harpur Mount (Manchester), Oasis Academy Limeside (Oldham), St James' Church of England Primary School (St. Helens), St Basil's Catholic Primary School (Halton), Spinney Avenue Church of England Voluntary Controlled Primary School (Halton).

### **The following schools will be moving into their 2<sup>nd</sup>/3<sup>rd</sup> year of the programme:**

Monksdown Primary School (Liverpool), Greenbank Primary School (Liverpool), St Mary's and St Thomas' CofE Primary School (St. Helens), Queen's Park CofE URC Primary School (St. Helens) and Blackbrook St Mary's Catholic Primary School (St. Helens).

### **The following maths specialists have been recruited to join the NW Mastery team to deliver local training:**

Sarah Lambert, Charlotte Foster, Sarah Platt and Lesley Plant.

They will become Mastery Professional Development leads delivering training and conducting school support visits.

Application process- please see here for further details: <http://bit.ly/2kpGplv>

If you are considering whether to join the programme, please read through the case studies from teachers on the programme. Partner schools say the programme results in more confident and higher-quality teaching, increased enjoyment of lessons, a deeper understanding of mathematics and higher achievement.

---

## EEF- Y2 Reasoning Project (collaborative project)

The project, using materials designed by researchers at Oxford University and funded by the Education Endowment Foundation (EEF) is being run in eight Maths Hubs areas and coordinated by the NCETM. NW Maths Hub 3 is one of the eight Maths Hubs participating.

An earlier EEF trial of the programme showed a positive impact on pupils' numeracy ability.

In this larger scale project, at NW Maths Hub 3, we have recruited 20 primary schools, from across the NW, to participate in the project, which will run during the school year 2016/2017. The 20 schools that have been selected, half have been chosen at random to receive the teaching intervention, the other half will carry on teaching as usual. This group will receive training and the materials for use during the school year 2017/2018. The impact of this trial will be shared in Spring 2018.

---

## Intervention in a Mastery Context in association with Edge Hill ECC Team (local project)

Intervention in a Mastery Context in association with Edge Hill ECC team- Teachers and TAs will develop their understanding and embed approaches to:

- **Mastery:-** teachers will develop their practice and principles ensuring that they plan for the 5 big ideas. They will meet the needs of all children and as a result of the activity outlined below will track children identified to ensure they make progress.
- **Variation theory** including: Three forms of procedural variation (same problem/ different method; same method/ different problem and varying examples) and Conceptual variation including different representations of mathematics; concept/ non-concept; the connective model
- **Diagnostic assessment:** using diagnostic assessment to prepare for planning, using diagnostic assessment to improve understanding of the learner and their needs and using diagnostic assessment to plan long term intervention.
- **Managing intervention:** Three levels of intervention: in class; immediate keep up and longer term catch up.

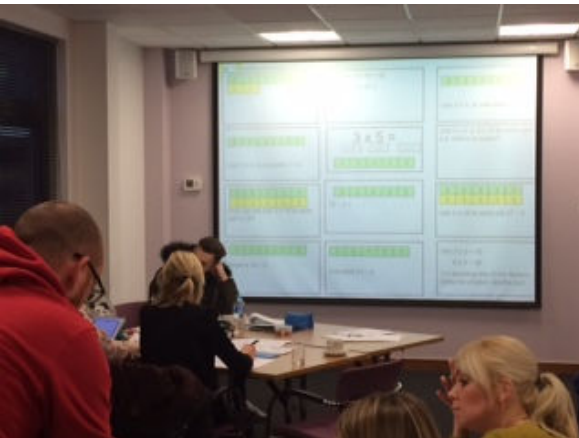
Immediate benefits of pupils: Gaps will be identified by the diagnostic assessments and targeted intervention will be applied.

So far 34 schools involving 68 participants, Teachers and TAs have been through the programme. We are currently training another 20 schools including 46 participants.

We will be holding a HT briefing to find out more on **Tuesday 20th June, 9.30-11.30am at The World of Glass, St Helens.**



## KS2-3 Transition



In past 2 years the programme has included: 46 schools, primary/secondary and 65 Y6/7 practitioners from schools in Knowsley, Liverpool, Warrington, Wirral, St Helens and Wigan. De la Salle (St Helens), Salford and Lancashire clusters will take part in the next round starting in June 2017.

Sessions have given practitioners from both phases, KS2 and 3, the opportunity to collaborate and to share and develop practice/policy and procedures. Teachers have had the opportunity to share books, schemes of work and planning, conduct lesson observations and environment walks to determine WWW and EBIs- comparing and reflecting on common practice. They have agreed and understand the benefits of common language ensuring consistency to enable progression across the key stages. They have developed a better understanding of progression through mathematical content/provision and as a result have improved subject knowledge across a range of mathematical concepts. It has helped to raise expectations with an increased respect and improved understanding of both phases. Teachers have had the opportunity to engage in CPD sessions based on the needs of the groups.

It is intended that the transition between primary (KS2) and Secondary (KS3) within all establishments will be smoother for students and therefore having a positive impact on pupils' outcomes (attainment and progress) and attitudes to learning will improve. KS3 will no longer be seen as 'The wasted years' and there will be a consistent approach to strategies and progression of themes and common language used. This project will continue to evolve based on participant feedback. If you are a secondary provider and have a number of feeder primary colleagues interested in joining this network then please contact Lisa Bradshaw or Lindsay Porter to find out more.

**Numberblocks- on CBeebies-** Debbie Morgan (Primary Maths Hub director) has worked on the exciting new programme. Celebrating the arrival of all the Numberblocks to 10 on @CBeebiesHQ with activities and more for primary children.

NW Maths hub 3 have been promoting this fantastic programme with all schools across the NW. Children have been encouraged to create and share their ideas.



# Secondary National and Local Projects

## Secondary Maths TSST in collaboration with Liverpool Hope University

An exciting offer for serving and returning secondary teachers who are moving into teaching mathematics, but do not have a previous mathematical qualification. It will enable staff to develop a deeper knowledge and understanding of all aspects of mathematics.

St Helens TSA has successfully run this project in since 2014-15 with 32 delegates completing the training programme so far. In 2016-17, we have recruited 26 candidates; this innovative Subject Knowledge Enhancement (SKE/TSST) course is delivered in partnership with experienced staff from Rainford High School working to support the Maths Hub

alongside extremely experienced staff from Liverpool Hope University.

Please see this flyer <http://bit.ly/25NGyek> for more details, including a proposed schedule for the training. All school based sessions will be delivered at Rainford High School.

Expressions of interest are now being taken to start training in Sept 2017-18. We have 30 places available with two recruitment windows (October and January starts). This programme is free of charge. Please contact: Lisa Bradshaw for further details.

## Maths Master Lead Teachers and Work Group Schools

The Secondary Masters who are leading the national programme on behalf of NWMathsHub 3 are as follows

Alex Cooper-Rainford High School, St Helens

Nicole Speer- Lord Derby Academy, Knowsley

Rebecca Ward- Deyes High School/ Lydiate Learning Trust High School, Liverpool

Matthew Thornley- Hawkley Hall High School, Wigan

Lindsay Porter, Secondary Maths Hub Lead is coordinating this work.

The Mastery Work Group Schools have been involved in two TRGs (Teacher Research Group) with positive feedback provided.

The work group schools are involved in a programme of support and development work involving all teachers from the lead and participating schools designed to introduce and encourage a teaching for mastery approach across the mathematics departments in those schools. Activities will include the following: collaborative planning workshops, TRG-style lesson observations and dialogue in each of the "Mastery Specialist" schools during the year, visits between WG schools to support sharing of practice, visits to primary Mastery Specialist school for TRG-style lesson observations and occasional wider open-lesson events for other interested schools.

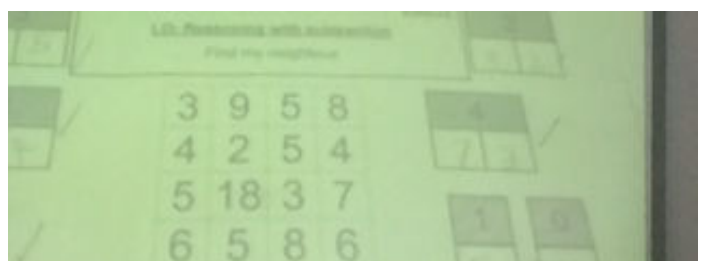
Maths Hubs will be recruiting another 4 Secondary Mastery Specialist Teachers and 24 Work Group schools in Autumn 2017. Further details to follow.

## Secondary Maths CPD Network (Whole school department opportunity)

Whole Secondary Maths departments have been meeting on a half termly basis to explore key mathematical themes. All themes have been selected based on need. Secondary Maths departments from across the NW have had the opportunity to engage in high quality CPD from experts in their field. It has provided an opportunity to network and share good practice. The next meeting will take place on: Monday 3rd July 2017 at Rainford High School and will focus on Primary Maths Mastery, KS2 Raised Expectations - National Curriculum/POS and Transitional support and guidance

Full programme details: <http://bit.ly/2q5bcjF>

This network has been a huge success with over 25 secondary maths departments attending on a regular basis. As a result we are developing a similar programme for 2017-18 to be released soon.



## Secondary Heads of Department Meetings

Lindsay Porter (AQA associate and Secondary Maths lead) will continue to deliver this network in St Helens and Wigan. We now have 25 HOD regularly attending. This is an opportunity for all Heads of departments to come together to review and share approaches to current national and local initiatives.

The final session for this term will be Tuesday 4th July, 1.30 –3.30pm at Rainford High School, St Helens.

### Autumn term sessions will take place on:

**St Helens/Knowsley/Sefton and surrounding LAs:** Friday 6th October 2017, 1.00-3.30pm at Rainford High school, Higher Ln, Rainford, Saint Helens WA11 8NY

**Wigan/Bolton/Warrington and surrounding LAs:** Tuesday 10th October 2017, 1.00-3.30pm Byrchall CPD Centre, Warrington Rd, Ashton-in-Makerfield, Wigan WN4 9PQ

**Wirral and surrounding LAs:** Tuesday 3rd October 2017, 1.00-3.30pm at Prenton High school for girls Birkenhead CH42 6RS

**Themes to include:** experience gained from the first round of the new GCSEs and associated implications for future rounds, changes implemented at KS3, Mastery- teaching for depth, lesson design (including the 5 big ideas), transition from KS2, effective collaboration from local schools and national updates.

Details: <http://bit.ly/2qvflJh>

## Secondary Maths NQT Programme

A key aim of this work group is to support teachers new to the profession to ensure they are providing a strong curriculum, teaching and professional development practices that can be shared amongst the departments they are working in and across the Hub region. This Work Group has run successfully for the past two years and we intend to review and evaluate this programme on an annual basis to ensure we are continuing to meet the needs of all Maths secondary NQTs across the patch.

### Trainees will:

- Become more confident when planning and organising effective mathematical opportunities
- Have the opportunity to network with colleagues that are new to the progression
- Learn how to manage a smoothly run maths classroom ensuring all learners are engaged
- Improve progressional understanding
- Have an improved understanding of what depth looks like leading to mastery
- Create and share good quality maths resources
- Motivate pupils to enjoy maths
- Learn to embed problem solving and develop reasoning opportunities in every lesson
- Reflect and evaluate practice ready to start their RQT year

This programme is being offered again in 2017-18.

Details: <http://bit.ly/2qv1yrk>

### Useful links include:

NCETM: <https://www.ncetm.org.uk/>

Maths Hub website: <http://www.nwmathshub3.co.uk/>

Nrich: <http://nrich.maths.org>

Maths No Problem: <http://www.mathsnoproblem.co.uk/>

Inspire (OUP): <https://global.oup.com/education/content/primary/series/inspire-maths/?region=uk>

Maths Associations: <http://www.nwmathshub3.co.uk/associations.html>

FMSP: <http://www.furthermaths.org.uk/>

Learn and Lead – Maths Strategy group info: <http://learnandlead.co.uk/>

CMSP: <http://www.core-maths.org>



## Secondary Maths Mastery

Congratulations to the following Secondary Schools that have been successful in gaining a place on the Maths Mastery Programme:

Weatherhead High School (Wirral), Weaverham High School (Cheshire West & Chester), Liverpool College (Liverpool), The Queen Katherine School (Cumbria), Middleton Technology School (Rochdale), Academy@Worden (Lancashire), Parklands High School (Lancashire), Rainford High Technology College (St. Helens), Blackburn Central High School (Blackburn with Darwen), Queen's Park High School (Cheshire West & Chester), Hartford Church of England High School (Cheshire West & Chester), Chesterfield High School (Sefton), Maghull High School (Sefton), Oasis Academy MediaCityUK (Salford), The Albion Academy (Salford), Oulder Hill Community School and Language College (Rochdale), Oasis Academy Oldham (Oldham), Bebington High Sports College (Wirral), South Wirral High School (Wirral), Hilbre High School (Wirral), Pensby High School (Wirral), Woodchurch High School (Wirral), Ridgeway High School (Wirral), West Kirby Grammar School (Wirral), Birkenhead Park School (Wirral), Wirral Grammar School for Girls (Wirral), The Oldershaw Academy (Wirral), The Mosslands School (Wirral) and The Catholic High School, Chester A Specialist Science College (Cheshire West & Chester).

These schools will attend initial training in Leeds or London and then supported by the local hub network of PDLs to deliver the programme throughout the next 12 months.



## Post-16 National and Local Projects

### CMSP– Core Maths Support Programme

Why Core Maths? Do you want to find out more about this qualification? Is it suitable for your school and your students?

- Gain a secure knowledge of the Core Maths curriculum and exams and understand the differences between different exam boards.
- Learn more about the strategies to use in your schools and colleges regarding how Core Maths can practically fit into the post-16 curriculum, how to staff it etc. by exploring case studies and hearing from schools and colleges who are already teaching it.
- Understand the philosophy of Core Maths – Maths in a real life context through problem solving.

Don't hesitate in contacting- Steven Nixon: [s.nixon@priestley.ac.uk](mailto:s.nixon@priestley.ac.uk) (NW Maths Hub 3 CMSP regional advisor) or Catherine Van Saarloos, [Catherine.VanSaarloos@liv-coll.ac.uk](mailto:Catherine.VanSaarloos@liv-coll.ac.uk) (Post 16 Lead).

The intention is that the number of schools delivering core maths will increase.

[core:maths] support programme

### Underground Maths- MEI

Underground Maths- MEI: This training has been designed to support all teachers of A level Mathematics. In order to be able to engage in all aspects of the course, participants will need to be confident with the content of AS Core Mathematics. To maximise impact and aid dissemination, we encourage schools to send two teachers on this course. The aim is to bring the Underground Mathematics resources to all teachers of A level Mathematics.

The session will run again in November 2017

Further details to follow...



## GCSE Resit Network Meeting

This was a successful and well attended GCSE resit network meeting during which Katharine Davies demonstrated some resources which she had developed specifically for these learners. A follow up session will be held in June. Teachers will be asked to bring resources that have worked well when teaching this cohort. In particular, for the new topics which are now on Foundation. For further details please contact: Catherine Van Sarloos (Post-16 lead): [Catherine.VanSaarloos@liv-coll.ac.uk](mailto:Catherine.VanSaarloos@liv-coll.ac.uk)

## Making Sense of Maths

An exciting new initiative for colleagues teaching level 3 mathematics—Sue Hough has agreed to run a 2 day course in the interim this year (one day in June and follow up in October/November). Further details to follow...

## Year 10 Core Maths event

An event for year 10 students alongside NW1 and NW2, to promote Core Maths is being organised. All schools from across the North West will be invited. Schools will be asked to select approx. 4 or 5 students that are keen but predicted to get a 4 or 5 in their GCSE. Further details to follow...

# CPD and Subject Leader Network Opportunities for 2016-17

## Primary CPD

Summer 2017 primary CPD offers:

**Effective Transition from EYFS to Year 1– Thursday 29th June 2017, 9am - 3pm, St Helens TSA Pod.**

EYFS teachers will work with Year 1 teachers to establish where children are on their mathematical pathway and how we can build on this learning into Year 1. There will be a range of practical ideas to support both year groups.

### Bar Modelling

**KS1:** Thursday 18<sup>th</sup> May 2017 9.00-12 noon

Nutgrove Primary School, Govett Road, St Helens, WA9 5NH

**Lower KS2:** Monday 22<sup>nd</sup> May 2017 9.00-12 noon

Nutgrove Primary School, Govett Road, St Helens, WA9 5NH

**Upper KS2:** Monday 22<sup>nd</sup> May 2017 1.30-3.30pm

Nutgrove Primary School, Govett Road, St Helens, WA9 5NH

For a preview of Autumn term 2017 offers, go to: <http://bit.ly/2q8iPDI>

## Primary Maths Subject Leaders Network

Tara Loughran will continue to deliver this network. We have 50+ subject leads that attend from St Helens, Knowsley, Wigan, Warrington, Sefton, Liverpool, Bolton and Halton.

**In 2016-17 the final sessions will run on:**

Friday 23rd June 2017- 9-3.30pm at St Helens Chamber, Salisbury St, Off Chalon Way, St Helens, Saint Helens WA10 1FY

The focus will be on Ensuring Challenge for the Higher Attainers and Showing Progress, Supporting Mathematical Transitions in addition to providing mathematical updates and current thinking.

For a preview of Autumn term 2017 offers, go to: <http://bit.ly/2qWSWcR>



For further information in relation to National and Local work streams that Maths Hub NW3 is involved in please visit:

<http://www.nwmathshub3.co.uk/index.html> or follow us on twitter: [@NWmathshub3](https://twitter.com/NWmathshub3)

Alternatively, please don't hesitate in contacting:

Lisa Bradshaw (Maths Hub Lead) [lisa.bradshaw@three-saints.org.uk](mailto:lisa.bradshaw@three-saints.org.uk)

Sarah McIlroy (Primary Mastery Lead) [smcilroy90@gmail.com](mailto:smcilroy90@gmail.com)

Lindsay Porter (Secondary Mastery Lead) [lindsayporter44@yahoo.co.uk](mailto:lindsayporter44@yahoo.co.uk)

Catherine Van Saarloos (Post 16 Lead) [Catherine.VanSaarloos@liv-coll.ac.uk](mailto:Catherine.VanSaarloos@liv-coll.ac.uk)

Sarah Makin (Admin) [sarah.makin@three-saints.org.uk](mailto:sarah.makin@three-saints.org.uk)

Debs Ayerst (Online Services Admin) [debsayerst@nwmathshub3.co.uk](mailto:debsayerst@nwmathshub3.co.uk)

---

## About our work:

As a Lead Maths Hub we provide support to all schools in the area and the NW, across all areas of maths education, including:

### The overall aim:

All Maths Hubs working together to support primary practitioners through to post 16 to have a chance to change/influence maths education across the country.

Recruitment of maths specialists into teaching.

Initial training of maths teachers and converting existing teachers into maths.

Co-ordinating and delivering a wide range of maths continuing professional development (CPD) and school-to-school support.

Ensuring maths leadership is developed, e.g. running a programme for aspiring heads of maths departments.

Helping maths enrichment programmes to reach a large number of pupils from primary school onwards.

---

## NW Maths Hubs Working Together - Annual Conference

**Tuesday 11th July 2017 at Whites Hotel, Macron Stadium, Bolton, BL6 6SF**

This conference is aimed at EYFS, KS1 and 2, Secondary and Post 16 staff including Maths Subject leaders, Heads of department/faculty, all senior leaders and anyone interested/excited in Maths practice! (see previous newsletter)

Featuring **Key Note Speakers:** Andrew Jeffrey (The Mathemagician) and Ems Lloyd (Director of Nrich)

**Workshops:** a range of Primary, Secondary and Post 16 available

**Marketplace:** A range of mathematical stalls to browse/prizes to be won!

**The cost of the conference is: £60.00** (includes resources, free gifts, light refreshments)

Booking form: <http://www.nwmathshub3.co.uk/index.php/conference>

**We look forward to welcoming you all to another great Maths Conference!**

